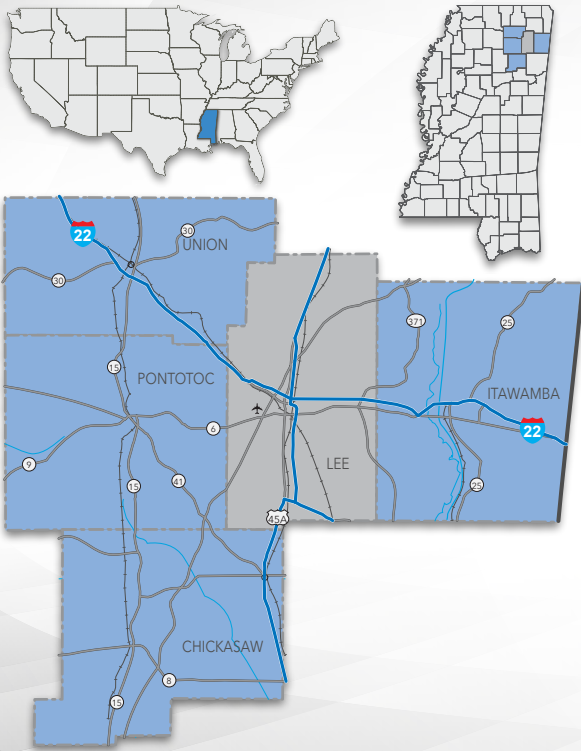


Fawn Grove

ITAWAMBA COUNTY • MISSISSIPPI



Site Information

- Available Acreage: ± 170 Acres (total)
- Ownership: Public (Itawamba County)
- General Topography: Rolling
- Zoning: Industrial
- Latitude: 34° 16' 5.24"N
- Longitude: -88° 31' 42.37"W

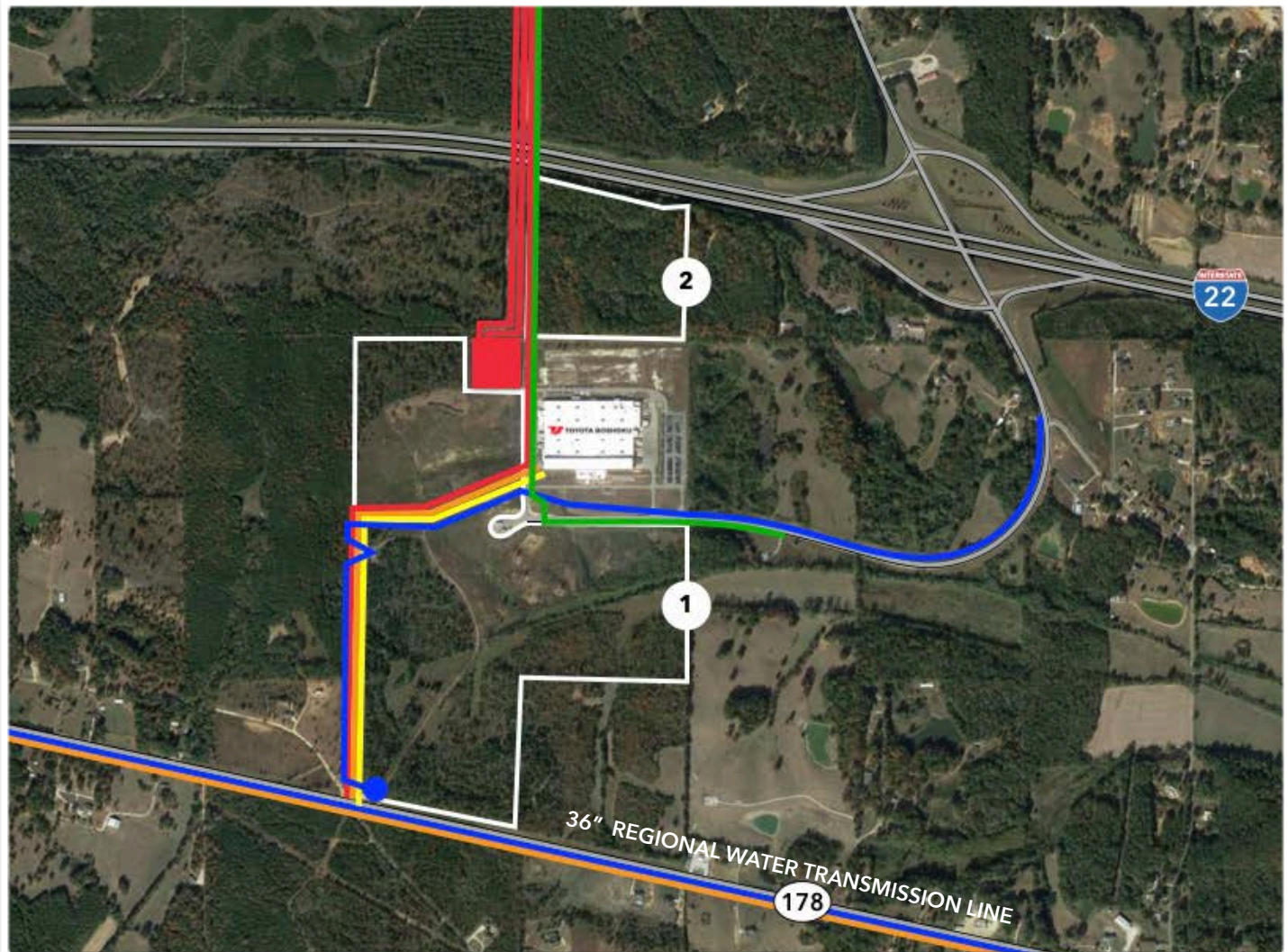
Transportation Infrastructure

- Nearest Interstate: I-22 (1.1 miles)
- Nearest Commercial Airport: Tupelo Regional Airport (15 miles)
- Nearest International Airport: Memphis International Airport (108 miles)
- Birmingham International Airport (128 miles)
- Huntsville International Airport (123 miles)

Utilities

- Electricity: Tombigbee Electric Power Association
 - substation located in industrial park
 - dual feed service
 - 3 phase, 13 KV, 477 conductor power lines servicing the site
- Natural Gas: Northeast Mississippi Natural Gas District
 - 2 inch gas line with up to 60 PSI
- Water: Dorsey Water Association
 - 12 inch line connects to the 300,000 gallon tank inside the industrial park
- Sewer: Town of Mantachie
 - served by an 8 inch pressure sewer line
- Fiber/Telecommunications: Fulton Telephone Company
 - 24 Fiber with 50 pair copper

Fawn Grove



FAWN GROVE - LEGEND

SITE BOUNDARY - 140 +/- AC.*	1
SITE BOUNDARY - 30 +/- AC.*	2
ELECTRIC - III-PHASE POWER -13KV	
WATER - 12"	
SEWER - 8"	
GAS -2"	
FIBER- 24, 50 PAIR COPPER	